

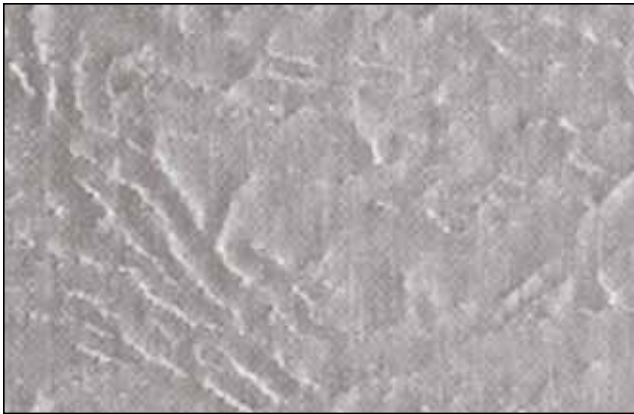
Accurate™ STAINLESS STEEL FINISHES SELECTION GUIDE

STANDARD FINISH

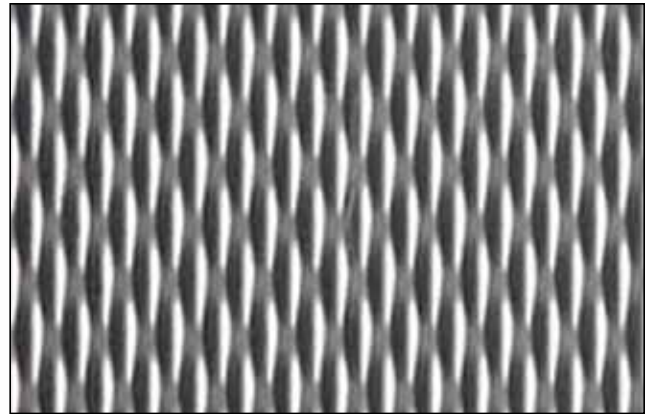


SATIN

OPTIONAL FINISHES



LEATHER



DIAMOND

Actual colors may vary from those shown due to limitations in the printing process.

All finishes are Type #304 Stainless Steel

Accurate Partitions Corp.

P.O. Box 287, Lyons, IL 60534

Tel: 708.442.6800 Fax: 708.442.7439

E-mail: info@accuratepartitions.com Web: accuratepartitions.com

©2012 Accurate Partitions Corp., an ASI Group Company

